



Specificity	Reactivity	Clone	Product Code	Purified	Alexa Fluor® 405	Alexa Fluor® 488	Alexa Fluor® 647	Alexa Fluor® 700	APC	Ascites	Azide Free	Biotin	FITC	Low Endotoxin	Pacific Blue™	RPE	RPE-Cy5	RPE- Alexa Fluor® 647	RPE- Alexa Fluor® 750	SN
Rodent Macrophage markers																				
CD11b*	Mouse	M1/70.15	MCA74	✓		✓	✓	✓			✓	✓	✓					✓	✓	✓
CD11b	Mouse	5C6	MCA711	✓							✓	✓	✓					✓	✓	
CD11c	Rat	OX-42	MCA275	✓		✓	✓	✓				✓	✓	✓	✓	✓	✓	✓	✓	
CD11b/CD18	Rat	ED8	MCA619	✓						✓		✓	✓							
CD31*	Mouse	ER-MP12	MCA2388	✓		✓	✓	✓				✓	✓					✓	✓	
CD31	Rat	TLD-3A12	MCA1334	✓		✓	✓	✓				✓	✓							
CD68	Mouse	FA-11	MCA1957	✓		✓	✓	✓				✓	✓	✓	✓	✓	✓	✓	✓	
CD68	Rat	ED1	MCA341	✓		✓	✓	✓				✓	✓							
CD115*	Mouse	604B5 2E11	MCA1898	✓								✓	✓							
CD163	Rat	ED2	MCA342	✓			✓	✓				✓	✓							
CD169	Rat	ED3	MCA343	✓								✓	✓							
CD169	Mouse	MOMA-1	MCA947	✓								✓	✓							✓
CD169	Mouse	3D6.112	MCA884	✓								✓	✓							
CD204	Mouse	2F8	MCA1322	✓								✓	✓							
CD206	Mouse	MR5D3	MCA2235	✓		✓	✓	✓				✓	✓							
Dectin-1	Mouse	2A11	MCA2289	✓								✓	✓							
Dectin-2	Mouse	D2.11E4	MCA2415	✓								✓	✓							
F4/80	Mouse	Cl:A3-1	MCA497	✓	✓	✓	✓	✓	✓			✓	✓					✓	✓	✓
Gr-1	Mouse	RB6-8C5	MCA2387	✓		✓	✓	✓				✓	✓							
Macrophages/monocytes	Mouse	MOMA-2	MCA519	✓		✓	✓	✓				✓	✓							
MARCO	Mouse	ED31	MCA1849	✓								✓	✓							
I Ly-6C	Mouse	ER-MP20	MCA2389	✓		✓	✓	✓				✓	✓							

* Available as multicolor reagents

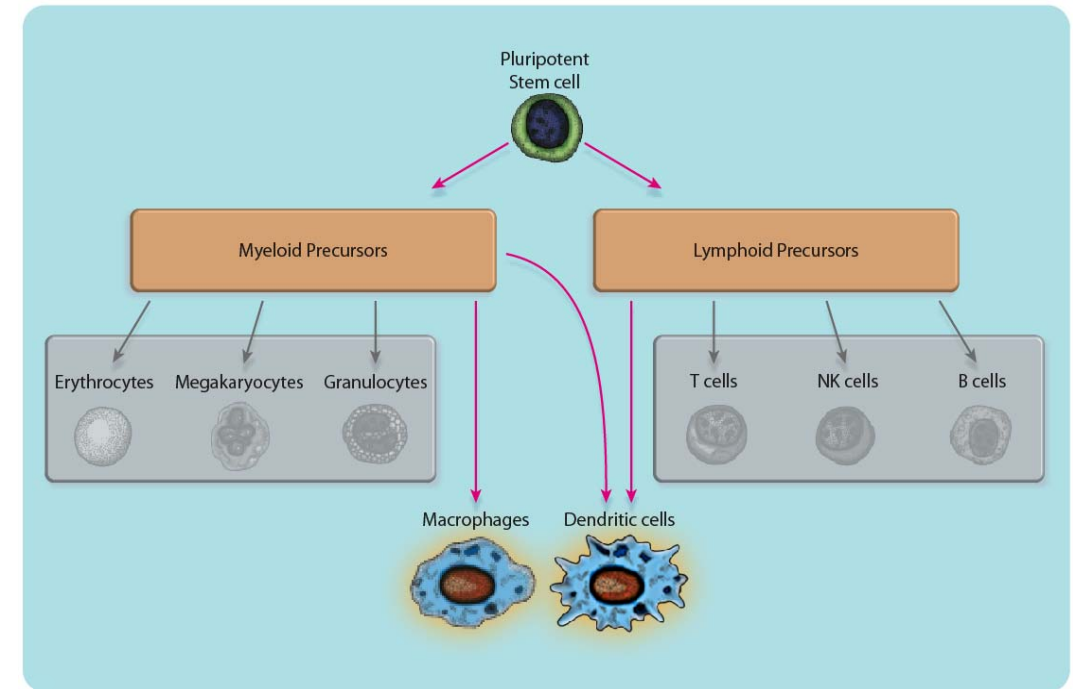
Specificity	Reactivity	Clone	Product Code	Purified	Alexa Fluor® 488	Alexa Fluor® 647	Alexa Fluor® 700	Azide Free	Biotin	FITC	Low Endotoxin	Pacific Blue™	RPE	RPE-Cy5/5.5	RPE-Cy7	RPE- Alexa Fluor® 647	RPE- Alexa Fluor® 750	SN	
Rodent Dendritic Cell markers																			
Alpha E2 integrin	Rat	OX-62	MCA1029	✓					✓										
CD8alpha	Mouse	53-6.7	MCA2694	✓					✓					✓					
CD11c	Mouse	N418	MCA1369	✓	✓	✓			✓	✓								✓	✓
CD11c	Rat	8A2	MCA1441	✓	✓	✓			✓	✓									
CD70	Mouse	FR70	MCA2302	✓	✓	✓			✓	✓									
CD80	Mouse	RM80	MCA2462	✓	✓	✓			✓	✓									
CD86	Mouse	RMMP-2	MCA1587	✓	✓	✓			✓	✓									
CD86	Mouse	PO3	MCA2463	✓	✓	✓			✓	✓									
CD86	Rat	OX-48	MCA2121	✓	✓	✓			✓	✓									
CD205	Mouse	NLDC-145	MCA949	✓	✓	✓	✓		✓	✓									
CD252 (OX40L)	Mouse	OX-89	MCA1881	✓				✓											
CD274 (PD-L1)	Mouse	MIH6	MCA2626	✓					✓	✓									
CD273 (PD-L2)	Mouse	TY25	MCA2465	✓	✓	✓			✓	✓			✓						
Dendritic/Intercdigitating cells	Mouse	MIDC-8	MCA948	✓															
Follicular dendritic cells	Rat	ED5	MCA530R	✓															

Dendritic Cells

Dendritic cells (DCs) are the most potent antigen presenting cells, capable of stimulating naïve T cells and inducing primary immune responses. They are located at sites where maximal microbial encounter occurs such as the gut, skin and lung. Following activation by contact with microbial products or proinflammatory cytokines, they acquire the ability to move out of tissues into the secondary lymphoid organs.

Macrophages

Macrophages are produced in the bone marrow and circulate in the blood as monocytes. In response to various cytokines, they differentiate into macrophages or myeloid dendritic cells in the peripheral tissues. The role of the resident macrophage is to phagocytose pathogens or cellular debris and to present this to lymphocytes and NK cells.



LIT.MAC.ROD.2008.1 © Copyright MorphoSys UK Ltd 2008. All rights reserved.

Published by MorphoSys UK Ltd, Endeavour House, Langford Lane, Langford Business Park, Kidlington, OX5 1GE
 Cy dyes are licensed from GE Healthcare Bio-Sciences Corp. under U.S. patent No. 5,268,486 and other patents pending, and are the proprietary rights of GE Healthcare Bio-Sciences Corp and Carnegie Mellon University. Alexa Fluor® and Pacific Blue™ are trademarks of Molecular Probes, Inc. OR USA.
 For research purposes only. Not for therapeutic or diagnostic use.